



BabelFish™™ Portal

Simplified, integrated, graphical access to all production and operational data over the internet.

Solutions datasheet

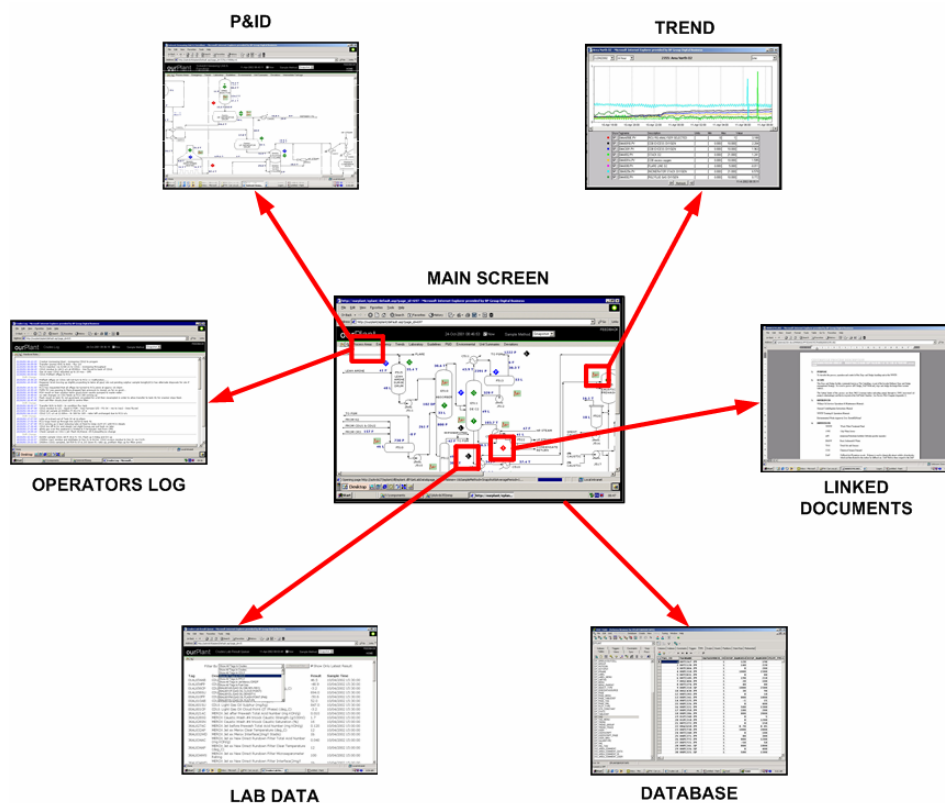
Features

BabelFish™™ Portal is a web-enabled software application, which is used to provide a simplified, integrated, and graphical view of production and operational data. Using a combination of open and custom interfaces, BabelFish™ Portal is able to provide a single view of all relevant data, irrespective of the source of the data, using dynamic web pages built by end users with basic computing skills.

Access to any electronic data

The types of data accessible via BabelFish™ Portal include:

- Real-time data from DCS and SCADA systems
- Real-time and historical data from a plant historian such as Honeywell PHD, OSI Software PI, or Wonderware Industrial SQL
- SAP, Maximo data
- Laboratory data
- Manually-entered production and operational figures
- Production allocation and reporting data
- Results of calculations
- All types of documents, drawings and datasheets



BabelFish™ Portal is simply configured to link to relevant sources of data. BabelFish™ Portal “understands” the different types of data that exists, and does not need to duplicate information in a central database. It provides fast XML-based connectors to diverse data sources including historians, databases and documents.

Contact ISS at enquiries@issgroup.com.au for more information or a demonstration.

www.issgroup.com.au



BabelFish™ Portal - Continued

Simplified, integrated, graphical access to all production and operational data over the internet.

Solutions datasheet

Familiar Web Browser access

All BabelFish™ Portal data is accessible via a standard web browser. No other client software is required. Once a page is viewed, the screen is automatically refreshed periodically so that current values are visible within a matter of a few seconds.

Users are able to easily identify areas of the plant, units and equipment. Visible tags allow the user to view either current or historical data values. Using the trend window, up to 8 different tags can appear in the trend simultaneously. The same trend data can also be viewed in a table.

By clicking on a tag, a popup menu shows associated tags and their values, allows the user to submit a maintenance request, view a drawing such as a P&ID, or to select other options from the menu. Links to URL's or other systems can be selected.

The tag search feature uses wildcards and allows easy access to tags that are not currently visible on the screen. "Snapshot" views of the data are easily selectable, to view the values that were current at a point in time, for example at 10am ten days prior.

Secure access to data

The BabelFish™ Portal data security model is based on integrated Windows NT domain security and configured within BabelFish™ Portal. All content filtering, according to the user security settings, is performed at the server rather than the client. This ensures only authorised users can access the data. The security model supports industry standard certification and encryption standards.

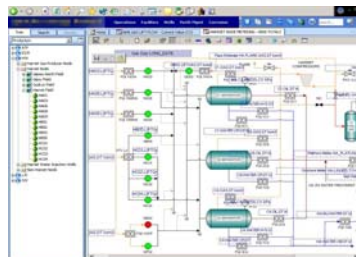
Document links

BabelFish™ Portal links to existing documents and Electronic Document Management Systems such as Documentum.

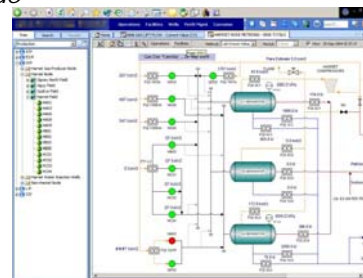
Configuration using browser

BabelFish™ Portal offers enormous flexibility and extensibility and offers sophisticated navigation features. Most of the page configuration can be achieved by end-users using the in-browser configuration tool. Tags, URL's, Hotspots, Buttons, and specific queries can all be set up in this way with a minimal amount of training. Development can be achieved remotely via the existing network / firewall infrastructure.

Contact ISS at enquiries@issgroup.com.au for more information or a demonstration.



Configuration Mode



Operating Mode

Benefits

For organisations that have a need to use production and operational data, BabelFish™ Portal provides some important benefits:

- ◆ Provides a single window to a variety of systems and makes it easier to understand what the whole plant is doing. BabelFish™ Portal puts all data into the right context for the operator; it provides the right access to the right data by the right people at the right time.
- ◆ Simple yet powerful navigation features and familiarity of the browser environment make it easy to learn and easy to use.
- ◆ Deployment is inexpensive because most of the existing systems can be left in place; BabelFish™ Portal simply connects up to them.
- ◆ Vendor independent, plug'n'play approach to obtaining data from different sources
- ◆ Much of the configuration can be done using inexpensive resources; it is easy to maintain on-site.
- ◆ Simpler licencing regime minimises overall software licencing requirements, cost and complexity.
- ◆ Data can be viewed in the next room or across the world.
- ◆ Performance is fast, even over dial-up telephone lines; users are able to spend less time in front of computers and more time on the job.

Powerful troubleshooting and auditing capability using snapshots of data as it existed at a prior point in time.

www.issgroup.com.au